



# Part List, Electrical

Applicable for Z300

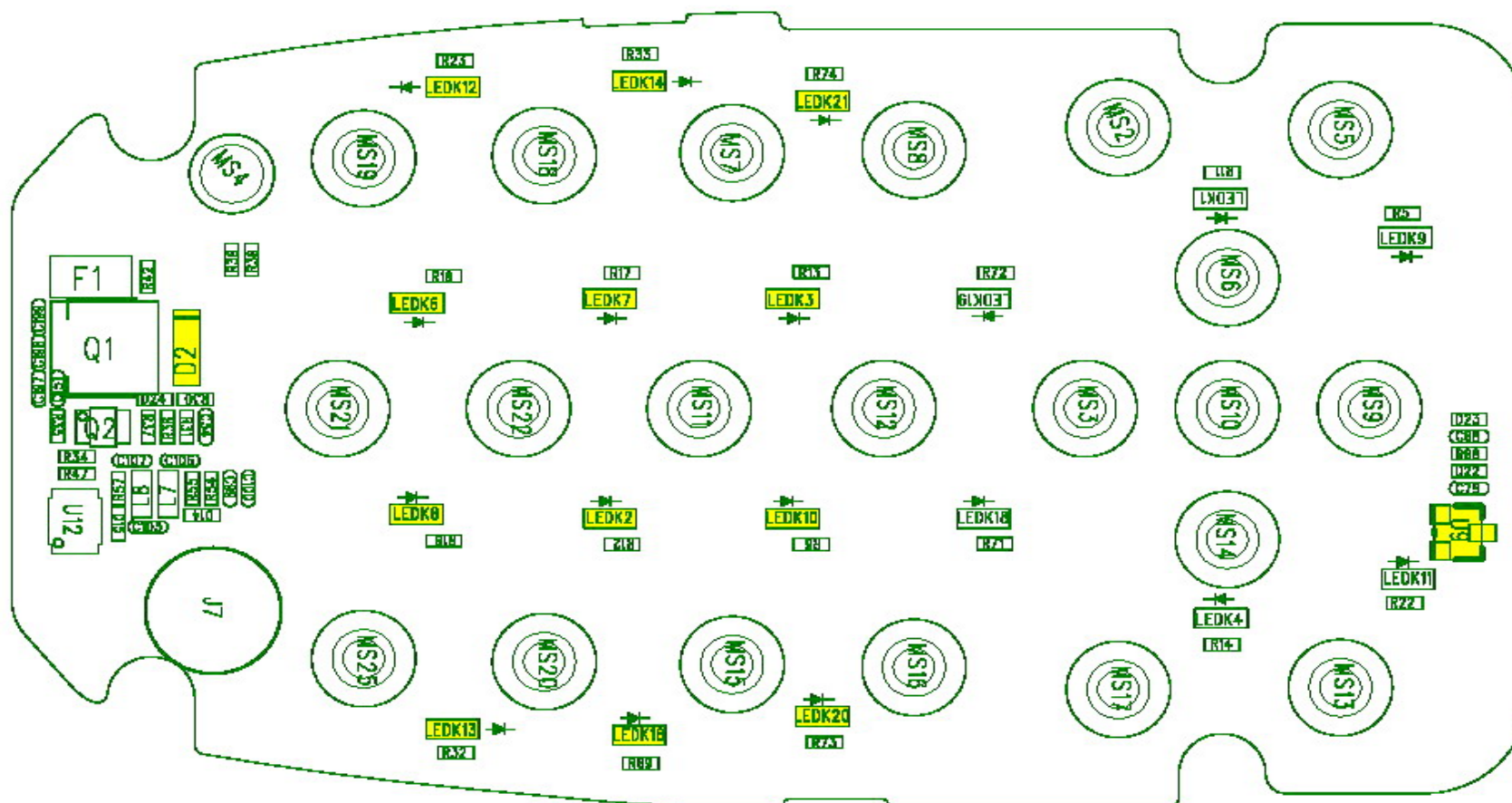
## Contents

<b>1</b>	<b>Mounting Drawing.....</b>	<b>2</b>
1.1	Main board (Primary Side).....	2
1.2	Main board (Secondary Side).....	3
<b>2</b>	<b>Part list Main Board .....</b>	<b>4</b>
<b>3</b>	<b>Revision History .....</b>	<b>6</b>

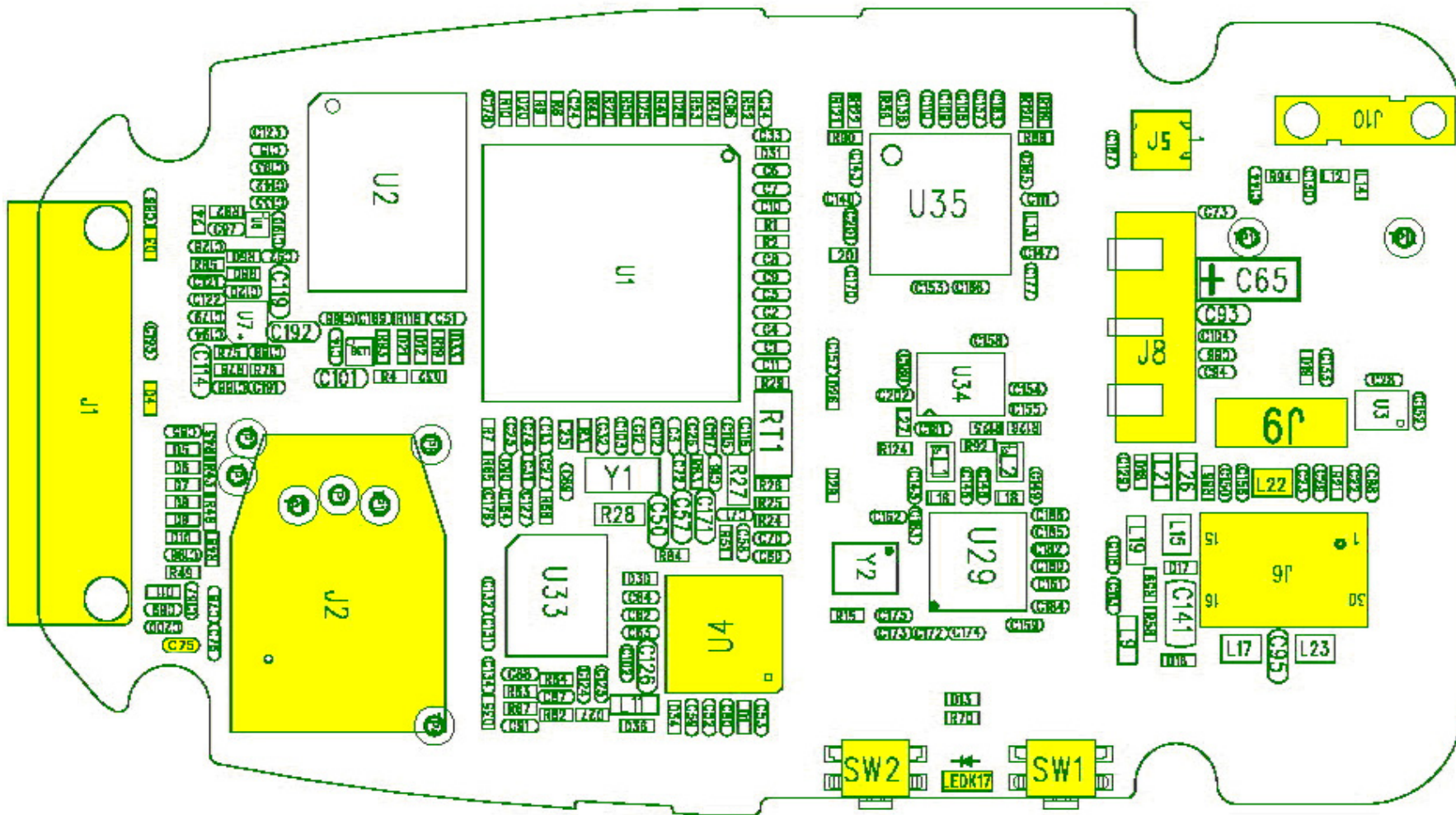
# 1 Mounting Drawing

The mounting drawings show the components position on the printed board.

## 1.1 Main board (Primary Side)



## 1.2 Main board (Secondary Side)



## 2 Part list Main Board

The Part List contains only components that are possible to replace on the main board.

Pos. number refers to the components position number on the board.

Parts available to order will be found in the Web Shop.

Pos.	Description	Part Number	Qty	Comments
LEDK 2, 3, 6, 7, 8, 10, 12, 13, 14, 16, 20, 21	Diod Led Orange	A/1090892176401W	12	Same as K300
LEDK17	ChargingLed Indicator	A/1090521SUG401W	1	Same as J210/J200/Z200
J5	RF Connector	A/1141280641E109	1	Same as J210/J200
J9	Speaker Connector	A/11425C020182JM	1	
J6	BTB Connector	A/11426E3031820D	1	
J2	SIM Connector	A/11422406138410	1	
J1	System Connector	A/1142461101853H	1	
J8	Battery Connector	A/11423305028A53	1	Same as K300
J10	Antenna Connector	A/11425K0201838T	1	
SW1,SW2	Side Key Switch	A/1151701041900D	2	Same as K300
L22	Inductor	A/3030400121001P	1	
D2	Diode Schottky	A/10920PMEG1A01E	1	Same as J210/J200
D3	Varistor	A/1321007000011E	1	Same as J210
D4	Base Band Protection Esd	A/1321007000023E	1	Same as J210
U9	IC HALL Censor	A/111DLX90248H7B	1	
U4	PMU	A/111S3HN10N3T1E	1	
	ShieldingCan Cover	A/407001222801KX	1	
	Copper Foil for hole 1	A/40700022280024	1	
	Copper Foil for hole 2	A/40700022280124	1	



Pos.	Description	Part Number	Qty	Comments
Y1	Crystal	A/1050032821667w	1	
C75	Conductor	A/10221105B0KA00	1	

### 3 Revision History

Rev	Date	Changes / Comments
A	2005-12-06	First Release
B	2005-12-15	Due to system problem No changes in the content
C	2006-06-20	Added Crystal
D	2006-07-25	Added C75